

## 2432 - GROOVE

### Product Description:

2432 Groove is an elegant and classic corrugated profile. The distance from ridge to ridge varies approx. from 3 - 5 mm.

### Composition:

2432 Groove is an embossed panel with special developed veneer with a particle board core.

### Fields of application:

Only for interior: Interior fittings. Furniture manufacture. Shop and fair construction. Doors.

### Technical Data:

First given measurement specifies the direction of embossment:

Invoiced size (mm): 1050 x 2450 / 2450 x 1050  
1270 x 3135

Delivered size (mm): 1050 x 2450 / 2450 x 1050  
1280 x 3145

Repeating pattern: No repeating pattern

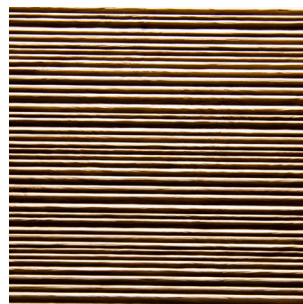
Available thicknesses: 18,5 mm  
Coreboard: Particle board  
Surface: raw, unlacquered

Density: ca. 780 kg/m<sup>3</sup>  
Weight: ca. 14,5 kg/m<sup>2</sup>

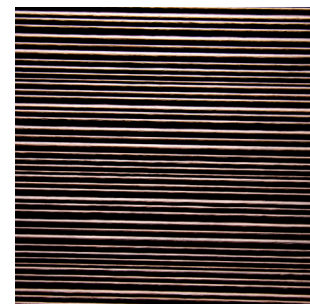
Embossment: one-side  
Deepness of structure: max. 1,1 mm

### Tolerances:

Straightness: 3,0 mm per Meter  
Size accuracy: +/- 1,0 mm per Meter  
Thickness allowance: +/- 0,3 mm  
Exactitude of profile: +/- 1,5 mm



**Knob Oak**  
Real wood veneer



**Heartwood walnut**  
Real wood veneer

### Explanatory notes:

The given details in this data sheet are our field-tested experience. They could not consider any parameter, use case or application and they are therefore without commitment. These data does not represent guarantee of condition in the legal sense or a assurance of the characteristics. No legal claims could be derived by using the information given in these data sheets or by our free of charge technical consultants. Images are for illustration purposes only. Wood is a natural product, deviations in color and texture can occur. Please visit our website for an impression of the color range, which can be expected.

Last update: 10.07.2018