

## 2369 - FLAME

### Product Description:

2369 Flame represents the natural movement and geometry of a flame. The uneven arrangement creates an interesting play of light and shadow.

### Composition:

2369 Flame is an embossed panel with special developed veneer / melamine resins with a MDF core.

### Fields of application:

Only for interior: Interior fittings.  
Furniture manufacture. Shop and fair construction.  
Doors.

### Technical Data:

First given measurement specifies the direction of embossment:

Invoiced size (mm): 2450 x 1050 / 1050 x 2450  
3135 x 1270 / 1270 x 3135  
Delivered size (mm): 2450 x 1050 / 1050 x 2450  
3145 x 1280 / 1280 x 3145

Max. repeat size (mm): 3125 x 1250 / 1250 x 3125  
Repeating pattern: Grid size 625 x 625 mm

Available thicknesses: 9 mm / 21 mm  
Coreboard: MDF  
Surface: raw, unlacquered

Density: ca. 880 kg/m<sup>3</sup>  
Weight: ca. 8 kg/m<sup>2</sup> (9 mm)  
ca. 18,5 kg/m<sup>2</sup> (21 mm)

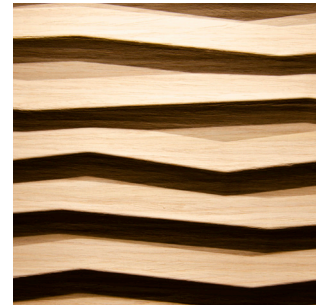
Embossment: one-side  
Tiefe der Verprägung: max. 2,8 mm

### Tolerances:

Straightness: 3,0 mm per Meter  
Size accuracy: +/- 1,0 mm per Meter  
Thickness allowance: +/- 0,3 mm  
Exactitude of profile: +/- 1,5 mm



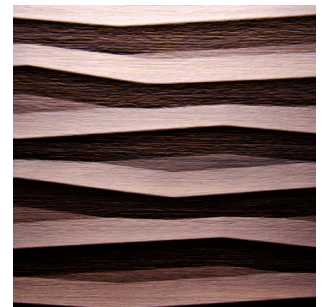
Lacquerable foil



Light Oak  
Alpi veneer



Walnut  
Alpi veneer



Heartwood walnut  
Real wood veneer



Oak chocolate  
Alpi veneer



Black  
Alpi veneer

### Explanatory notes:

The given details in this data sheet are our field-tested experience. They could not consider any parameter, use case or application and they are therefore without commitment. These data does not represent guarantee of condition in the legal sense or a assurance of the characteristics. No legal claims could be derived by using the information given in these data sheets or by our free of charge technical consultants. Images are for illustration purposes only. Wood is a natural product, deviations in color and texture can occur. Please visit our website for an impression of the color range, which can be expected.

Last update: 10.07.2018