

2261 - SISAL

Product Description:

2261 Sisal represents the leaves of the Sisal-Agave. The fine surface, which flows slightly wavy appears very filigree and elegant with an embossment of up to 1,3 mm deepness.

Composition:

2261 Sisal is an embossed panel with special developed veneer with a MDF core.

Fields of application:

Only for interior: Interior fittings. Furniture manufacture. Shop and fair construction. Doors.

Technical Data:

First given measurement specifies the direction of embossment:

Invoiced size (mm): 2450 x 1050 / 1050 x 2450
3135 x 1270 / 1270 x 3135
Delivered size (mm): 2450 x 1050 / 1050 x 2450
3145 x 1280 / 1280 x 3145

Repeating pattern: No repeating pattern

Available thicknesses: 4,5 mm / 18,5 mm
Coreboard: MDF
Surface: raw, unlacquered

Density: ca. 900 kg/m³
Weight: ca. 5 kg/m² (4,5 mm)
ca. 17 kg/m² (18,5 mm)

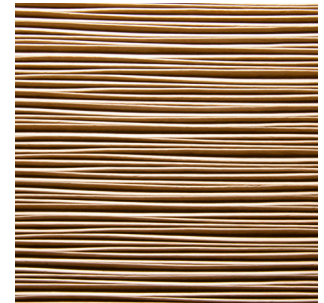
Embossment: one-side
Deepness of structure: max. 1,3 mm

Tolerances:

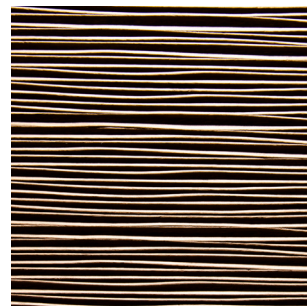
Straightness: 3,0 mm per Meter
Size accuracy: +/- 1,0 mm per Meter
Thickness allowance: +/- 0,3 mm
Exactitude of profile: +/- 1,5 mm



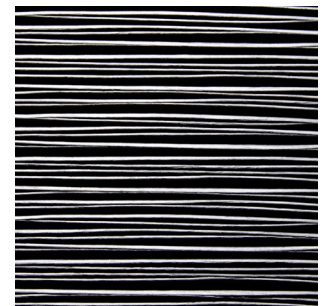
White
Alpi veneer



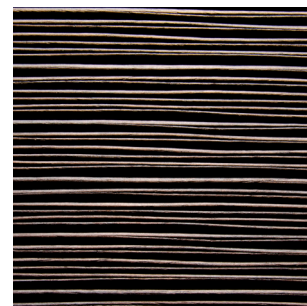
Light Oak
Alpi veneer



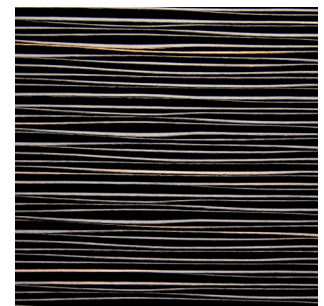
Walnut
Alpi veneer



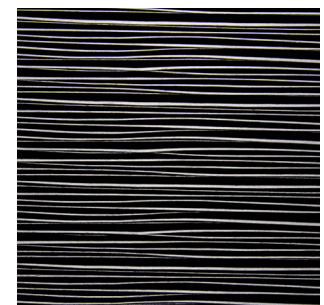
Grey
Alpi veneer



Oak chocolate
Alpi veneer



Ebony Maro
Alpi veneer



Black
Alpi veneer

Explanatory notes:

The given details in this data sheet are our field-tested experience. They could not consider any parameter, use case or application and they are therefore without commitment. These data does not represent guarantee of condition in the legal sense or a assurance of the characteristics. No legal claims could be derived by using the information given in these data sheets or by our free of charge technical consultants. Images are for illustration purposes only. Wood is a natural product, deviations in color and texture can occur. Please visit our website for an impression of the color range, which can be expected.

Last update: 10.07.2018